

EDUCATION  
the  
WINNIPESAUKEE  
playhouse  
DEPARTMENT

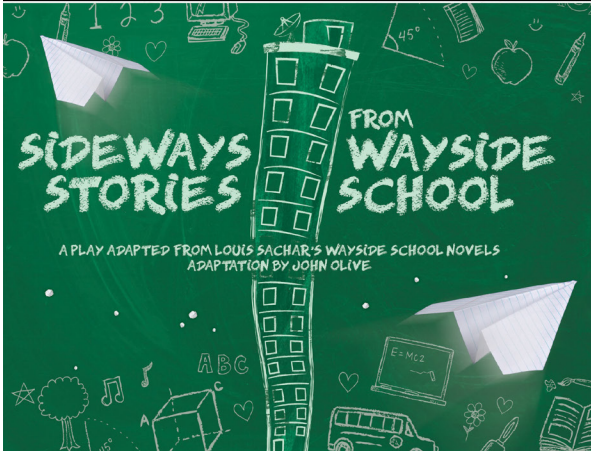
2024  
SEASON



By ANNE WASHBURN  
Score by MICHAEL FRIEDMAN  
Lyrics by ANNE WASHBURN

FEBRUARY  
9-10 | 17-18

PERFORMED BY STUDENTS AGES 13-18



SIDWAYS STORIES FROM WAYSIDE SCHOOL

A PLAY ADAPTED FROM LOUIS SACHAR'S WAYSIDE SCHOOL NOVELS  
ADAPTATION BY JOHN OLIVE

FEBRUARY  
10-11 | 16-17

PERFORMED BY STUDENTS AGES 8-13

SPONSORS:



NEW  
HAMPTON  
SCHOOL



[WINNIPESAUKEEPLAYHOUSE.ORG](http://WINNIPESAUKEEPLAYHOUSE.ORG)

603.279.0333

33 Footlight Circle, Meredith NH 03253



# Meredith Marina

603.279.7921



## BOAT RENTALS & Jet-Ski Rentals



*Make A Splash!*



One of the largest  
**BOAT RENTAL FLEETS**  
on Lake Winnepesaukee!

NEW & USED BOAT SALES

*Hunter*

*tió*  
ADAPT

*Sweetwater*

*Sanpan*

*Aqua Patio*

*Premier*  
Pontoons

MARINE STORE & BOATING ACCESSORIES

603-279-7921



**BOAT SALES • BROKERAGE • VALET • SERVICE • RENTALS • STORAGE**

2 Bayshore Drive, Meredith, NH • Meredith Bay • Lake Winnepesaukee



[www.meredithmarina.com](http://www.meredithmarina.com)

## *Board of Trustees*

Renee Speltz  
Chair  
Retired Mental Health Counselor and  
Consultant

Bill Bald  
Vice Chair  
President  
Melcher and Prescott Insurance

Raymond Abramson, CPA  
Treasurer  
Owner  
Abramson & Company, LLC

Kaitlin M. O'Neil  
Secretary  
Attorney  
Normandin, Cheney & O'Neil, PLLC

### *Members at Large*

Eden Unger Bowditch  
Author and Lecturer  
Plymouth State University

Julie Hirshan Hart  
Editor  
The Laconia Daily Sun

Lesley Pankhurst  
Co-Founder and Patron and  
Company Services Director  
The Winnepesaukee Playhouse

Kathleen Sweeney, CPA  
Owner  
Kathleen Sweeney CPA



Artistic Director.....Timothy L'Ecuyer  
Managing Director.....Thom Beaulieu  
Patron & Company Services Director.....Lesley Pankhurst  
Dir. of Education & Community Engagement.....Cory Lawson  
Production Manager.....Amanda Dickinson  
Technical Director.....Matthew Hutchens  
Bookkeeper.....Donna Findlay

*The Winnepesaukee Playhouse  
has many volunteer  
opportunities. To find out how  
you can become a volunteer,  
contact us at  
[info@winnisplayhouse.org](mailto:info@winnisplayhouse.org)*

The Winnepesaukee Playhouse  
33 Footlight Circle, Meredith NH 03253  
Tel. (603) 279-0333

[www.winnepesaukeeplayhouse.org](http://www.winnepesaukeeplayhouse.org)



## For Your Information

**Please** turn your cell phone and any other electronic devices completely off. Leaving them on silent or vibrate may interfere with our communication systems and interrupt the flow of the performance.

**Please** refrain from photography or recordings of any kind, as this violates our royalty agreements.

**Please** note that if you must, in an emergency, use the restrooms during the performance, our House Manager will return you to your seat at an appropriate break in the performance.

**Please** be sure you can hear us! For our theatre patrons who have experienced varying degrees of hearing impairment, please take advantage of our state-of-the-art **Assisted Listening System**.

If you are a hearing aid user who has a tele-coil function in your hearing aid you will be able to access our system directly after turning on that function. You may need to contact your hearing aid provider to inquire about the tele-coil in your particular hearing aid and ensure that it has been activated and instructed on how to turn it on when you are in the theatre. For patrons without tele-coil hearing aids, we have a limited number of headsets available on a first-come, first-served basis. Please see the box office if you would like to use one.

The Assisted Listening System is made possible by a generous donation from The Maurice and Rhoda Miller Endowment Fund.

**Please** keep in touch! Visit our website at [www.winnipesaukeeplayhouse.org](http://www.winnipesaukeeplayhouse.org) to join our email list. You can also follow us on Facebook and Instagram.



Dear Friends,

On behalf of everyone at the Winnepesaukee Playhouse, it is my great privilege to welcome you and thank you for joining us for the 2024 Season! I am constantly inspired by the remarkable passion of this community. I am grateful for the skilled artists who bring theatre to life on our stage, the intrepid staff members who create and maintain the structures and pathways underpinning the work, the members of our dedicated board of trustees who see to the health and longevity of the organization, and especially you—the patrons who engage in the work with generosity, openness, and vigor.



Engaging with the arts, especially theatre, has always helped me wrestle with big questions. It does this by narrowing the aperture and challenging me to focus on specific human stories—both those that are familiar and those that are outside of my experience. A mentor of mine is fond of summarizing this by saying that “theatre is the gym for the empathy muscle.” Tales of students in a ridiculous school surviving the antics of their outrageous teachers, members of a family in Northern Ireland trying to hold on to hope and each other in the midst of *The Troubles*, a play telling the story of the arrival of the literal devil... all of these stories can help transform the incomprehensibly large into something more navigable.

During an election year, I often find myself wrestling with big questions about power. As we take part in this important national debate, my thoughts can tend a little toward the metaphysical: How should an individual ethically obtain and use power? What do we give up when we prioritize seeking power? What restrictions should be imposed on it? Is there any way to prevent structural inequities from continually granting power to only a select few? I also think a lot about the obligations those in power have to those who lack it.

Then, typically, I roll over in bed and tell myself for the fifth time that I really need to go to sleep because I have to be awake in a few hours.

I don't expect any of us will walk out of the theatre today with simple, concrete answers to big questions about power or, frankly, anything else. But I know it's worth engaging in the conversation with openness and empathy. I'm so grateful we're here together to do that. Maybe the hours we spend here will equip us with a few new ways of talking with each other, something we can all use as Election Day draws closer.

Thank you for engaging with this work—for being part of this community.

Timothy L'Ecuyer  
Artistic Director

Supporting the causes you care about  
and the communities we call home.

*We bank on kindness.*



Proud Supporter of  
*The Winnepesaukee Playhouse*



BNH.Bank  
Member FDIC



## FIND YOUR ESCAPE!

**DOWNTOWN MEREDITH**

603.279.3905

312 Daniel Webster Hwy

**DOWNTOWN LACONIA**

603.409.6756

630 Main St.

[www.innisfreebookshop.com](http://www.innisfreebookshop.com)



**BIG ENOUGH TO SERVE YOU.  
SMALL ENOUGH TO KNOW YOU.**

**NORMANDIN, CHENEY & O'NEIL, PLLC**  
ATTORNEYS AT LAW

Experience you can rely on. Advice you can trust.

*Wills, Trusts and  
Estate Planning  
Real Estate and  
Land Use*

*Commercial and Corporate Law  
Injury Law  
Civil and Criminal Litigation*

**603-524-4380**  
**(or 1-800-529-0631)**  
**www.ncolaw.com**

*213 Union Avenue  
P.O. Box 575  
Laconia, New Hampshire 03247*

We are a charitable organization which exists to meet the health needs of individuals within the communities **we serve.**

**CONCORD HOSPITAL**  
*Your Regional Health System*

CONCORD | FRANKLIN | LACONIA

**concordhospital.org**

*We are thrilled to support  
The Winnepesaukee Playhouse  
Temple B'nai Israel*

Laconia, NH



Temple B'nai Israel



THE  
New Hampshire  
**JEWISH  
FOOD  
Festival**



TBINH.ORG

*The Center of Jewish Life  
in The Center of New Hampshire*



Fire & Water -  
Cleanup & Restoration™

**FASTER TO  
ANY SIZE  
DISASTER**



**SERVPRO OF THE LAKES REGION**  
**603-527-2518**

Like it never even happened.®

## 2024 SHOW LISTINGS

# PROFESSIONAL THEATRE

### June 21-July 6: Jersey Boys

The Story of Frankie Valli & the Four Seasons

Book by Marshall Brickman and Rick Elice, Music by Bob Gaudio,

Lyrics by Bob Crewe

Sponsored by:



A jukebox musical that's "just too good to be true!" With phenomenal music, memorable characters, and great storytelling, *Jersey Boys* follows the fascinating evolution of four blue-collar kids who became one of the greatest successes in pop-music history. Winner of both the Tony and Olivier Awards for Best Musical, the show features chart-topping hits including "Sherry," "Big Girls Don't Cry," "Can't Take My Eyes Off You," and more!



### July 11-20: Witch

By Jen Silverman

Sponsored by:



Health Club

**The devil comes to town**  
This fiendishly funny and anachronistically contemporary play is a mature and inventive retelling of a Jacobean drama. The arrival of Scratch, the literal devil, tempts the residents of Edmonton to confront – and perhaps indulge – their darkest wishes... in exchange for their souls. Elizabeth should be his easiest target, having been labeled a "witch" and cast out by the town, but her soul is not so readily bought. Has the devil met his match?





## 2024 SHOW LISTINGS

# PROFESSIONAL THEATRE

### July 25-August 3: La Cage aux Folles

Book by Harvey Fierstein, Music and Lyrics by Jerry Herman

Based on the play by Jean Poiret

The Broadway smash hit musical comedy!

The “rather gaudy, but also rather grand” winner of six Tony Awards including Best Musical, Best Score, and Best Book, *La Cage aux Folles* is a musical comedy about family that is filled with glitz, glamour, and drag queens! Based on the hit French farce that also inspired Hollywood’s *The Birdcage*, this Broadway smash includes favorite songs like “I Am What I Am” and “The Best of Times.” It encourages us all to stay true to ourselves.

### August 8-17: Richard III

By William Shakespeare

“Every tale condemns me for a villain”

Performed as a heated presidential election in the United States ramps up, the story of Shakespeare’s most notorious antihero asks us to consider the price that we pay when we seek power. A small, powerful ensemble of actors brings this classic story to new life in a contemporary production that reverberates with fresh relevance.

Sponsored by:

  
NORMANDIN, CHENEY & O'NEIL, PLLC  
ATTORNEYS AT LAW

98.3<sup>fm</sup>  
**Frank**

## 2024 SHOW LISTINGS

# PROFESSIONAL THEATRE

### August 22-September 1: *In the Heights*

Music and Lyrics by Lin-Manuel Miranda, Book by Quiara Alegría Hudes  
Conceived by Lin-Manuel Miranda

**Lin-Manuel Miranda's first Broadway hit!**

*In the Heights* tells the story of a vibrant Latinx community in New York's Washington Heights neighborhood – a place where the coffee from the corner bodega is light and sweet, the windows are always open, and the breeze carries the rhythm of three generations of music. It's also a community on the brink of change, full of hopes, dreams and pressures, where the biggest struggles can be deciding which traditions you take with you, and which ones you leave behind.

Sponsored by:

Supporting the Arts  
**LAURA & GARY STEPHAN**  
*In loving memory*  
Dorothy Marie Schrader  
Gerald Lewis Schrader

### October 19, 26-27: *A Year with Frog and Toad*

Music by Robert Reale, Book and Lyrics by Willie Reale  
Based on the books by Arnold Lobel

**A timeless story of friendship**

Arnold Lobel's well-loved books have been turned into a whimsical show following two great friends – the cheerful, popular Frog and the rather grumpy Toad – through four fun-filled seasons. With an upbeat score and lots of laughs, *A Year with Frog and Toad* is the ultimate family musical.

**Professional Theatre for Young Audiences**

Sponsored by:



Delivering on **A promise.**



## 2024 SHOW LISTINGS

# EDUCATION DEPARTMENT

### February 9-18: Mr. Burns, a post-electric play

By Anne Washburn, Score by Michael Friedman, Lyrics by Anne Washburn

**A tale of survival... and the enduring power of The Simpsons**

In this dark comedy, a group of post-apocalyptic survivors make sense of an environment that no longer makes sense by recreating their vanished world through storytelling (some of it featuring Bart Simpson), turning the pop culture of our era into the mythology of the future.

Performed by students ages 13-18

Sponsored by:



NEW  
HAMPTON  
SCHOOL

### February 10-17: Sideways Stories from Wayside School

Adapted by John Olive, Based on the novels by Louis Sachar

**The silliest stories from the strangest school!**

This hilarious play based on Louis Sachar's beloved book series explores the happenings at Wayside School, which is kind of a strange place. It's thirty stories high with only one classroom per story. (Well, actually, only twenty-nine stories high, because Miss Zarves on the 19th floor doesn't exist.) Whether it's teachers turning students into apples or the cow hiding in the classrooms, all is not normal at this mysterious school. Performed by students ages 8-13.

Sponsored by:



NEW  
HAMPTON  
SCHOOL

 **DELTA DENTAL**

## 2024 SHOW LISTINGS

# COMMUNITY THEATRE

### February 22-25: The Sherlock Mystery Radio Hour

A Live Radio Drama

Based on the works of Sir Arthur Conan Doyle

#### A Yearly Tradition!

The Winni Players' annual live radio play is back! Step back in time to when radio was king and the family gathered around it for their favorite dramas. This year you will get transported into the captivating world of Sherlock Holmes and Dr. John Watson. Join us for an evening filled with suspense, deduction, and intrigue as we present two riveting radio-play adventures featuring the great detective himself: "The Case of the Haunted Chateau" and "The Case of the Iron Box".

Sponsored by:



### April 25-28: The Ferryman

By Jez Butterworth

A "fiercely gripping play." - The New York Times  
County Armagh, Northern Ireland, 1981. The Carney farmhouse is a hive of activity with preparations for the annual harvest. A day of hard work on the land and a traditional night of feasting and celebration lie ahead. But this year they will be interrupted by a visitor. Winner of the Tony Award for Best Play, it's a powerful exploration of humanity's resilience and the unspoken secrets of Ireland's past.

Sponsored by:

Supporting the Arts  
**LAURA & GARY STEPHAN**  
*In loving memory*  
Dorothy Marie Schrader  
Gerald Lewis Schrader



## 2024 SHOW LISTINGS

# SPECIAL EVENTS

### March 1-3: On the Exhale

By Martin Zimmerman

**When tragedy strikes, take a breath and get a grip**

When a senseless act of violence changes her life forever, a liberal college professor finds herself inexplicably drawn to the very weapon used to perpetrate the crime--and to the irresistible feeling of power that comes from holding life and death in her hands. Peering down the barrel of a uniquely American crisis, she begins to suspect that when it comes to gun violence, we're all part of the problem. This is the New Hampshire premiere of Martín Zimmerman's gripping play, which draws you into the white-hot center of our country's most urgent debate.

Presented by



About theatreKAPOW  
theatreKAPOW ([www.tkapow.com](http://www.tkapow.com))  
develops ensemble productions of great dramatic literature to explore the human experience and inspire and challenge both artist and audience. We put stories on stage and create a safe space to start conversations to begin to heal communities, families, and hearts.

### November 16: ImprovOlympics!

Join teams from local non-profit organizations for a night of improv comedy and fundraising! This popular event will pit local amateur comedians against each other in a **Whose Line Is It Anyway?** battle to make you laugh and raise funds for worthy local causes.

Are you associated with a local non-profit and would like to get involved?  
Email [info@winniplyhouse.org](mailto:info@winniplyhouse.org) to find out how you can put a team together!

## 2024 SHOW LISTINGS

# EDUCATIONAL AND COMMUNITY THEATRE

### December 11-15: Roald Dahl's Matilda the Musical

Book by Dennis Kelly, Music & Lyrics by Tim Minchin

**Sometimes you have to be a little bit naughty!**

In 2010, Dahl's beloved children's book leapt to the stage bringing his characters to life with dynamic songs and innovative staging, winning 16 Best Musical awards! It's the inspiring story of an extraordinary girl with an unbounded imagination who proves that, despite the odds, you can do anything you put your mind to.

Performed by local adults and students ages 8 and above.

Sponsored by:

Supporting the Arts  
**LAURA & GARY STEPHAN**  
*In loving memory*  
Dorothy Marie Schrader  
Gerald Lewis Schrader



The Winnepesaukee Playhouse Education Department promotes the developmentally appropriate acquisition of theatrical skills, fosters a life-long appreciation of the technique, history, and literature of theatre and its ancillary fields of study, and—above all—seeks to inspire its students to use theatre as a tool to develop empathy, with which they may explore and come to better understand the world.



The Winni Players Community Theatre uses live theatre to provide its members with opportunities for artistic expression, personal growth, and friendship.

We build community through theatre.

# We're in Your Corner

People today can spend nearly half their lives over the age of 50. That's a lot of living. So, it helps to have a wise friend and fierce defender like AARP in your community.

Find us at [aarp.org/nh](https://aarp.org/nh).



Caring has always been at the heart of everything we do. By building and nurturing relationships, we can cultivate a community where we all thrive.



800.922.6872 mvsb.com

# HART'S TURKEY FARM Restaurant



233 Daniel Webster Hwy  
Meredith, NH 03253  
603-279-6212  
hartsturkeyfarm.com

Regular  
Children &  
Mini  
Menus  
Available  
Gift Shop  
Catering



## DELTA DENTAL

www.nedelta.com

# IRWIN AUTOMOTIVE GROUP

603-524-4922 | irwinzone.com

*Serving New Hampshire Since 1951*

59 Bisson Avenue Laconia, NH

446 Union Avenue Laconia, NH



# OVERHEAD DOOR OPTIONS LLC

603-279-5700

185 Waukewan Street, Meredith, NH  
www.OverheadDoorOptions.com



LiftMaster

Overhead Doors Options, LLC. offers a wide variety of quality residential and commercial garage doors and openers. We provide prompt, professional maintenance and repair service on all makes and models of garage doors.

A FAMILY OWNED AND OPERATED GARAGE DOOR COMPANY SERVICING THE LAKES AND WHITE MOUNTAIN REGIONS FOR OVER 30 YEARS!



Visit our Showroom • We have 10 full doors on display



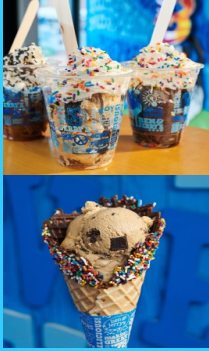


**BUY ONE GET  
ONE 50% OFF!**

Open 'til 10pm daily

**Mill Falls Marketplace  
Meredith  
603-279-2200**

*Equal or lesser item is free.  
Excludes merchandise, pints & quarts.  
Expires 12/2024*



**As-Seen on the Phantom Gourmet!**

**Get 10% OFF  
With This AD!\***



**Amazing dining  
Before or after the show!**



**blue**  
*bistro*

**The Finest Steaks & Seafood**  
on Winnepesaukee

- Brilliantly Crafted Cuisine Overlooking the Lake
- USDA Prime Beef, Fresh Seafood & Exquisite "HopeMade" Desserts
- Live Music | Bountiful Gourmet Breakfasts
- "The TOP SPOT to EAT on Lake Winnepesaukee!" - Phantom Gourmet

**NazBar**  
*Grill*

**A Seriously Good Time!**

- Lunch, Dinner & Fabulous Tropical Drinks - Waterside!
- LIVE Bands on the Beach
- Spectacular Sunsets!

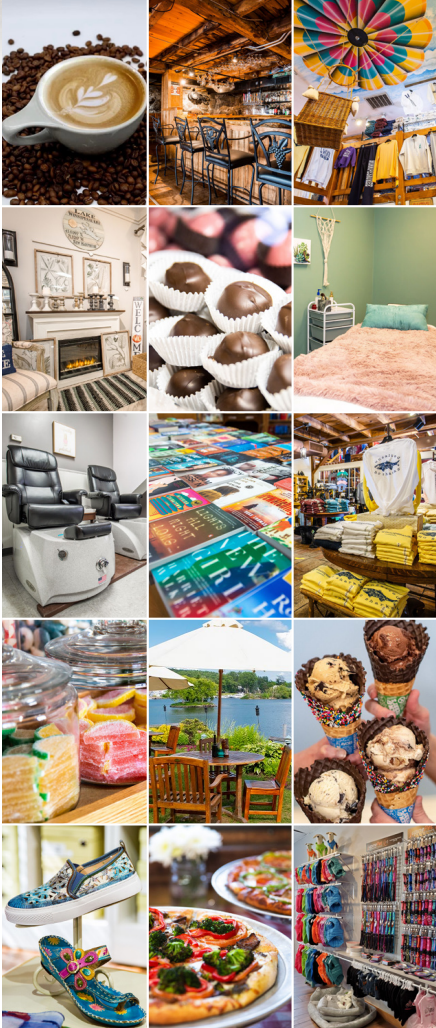
\* With purchase of one entree. Cannot be combined with other offers. Valid through 10/1/24 at The Blue Bistro or NazBar & Grill.



1086 Weirs Blvd. - Laconia, NH | 888.55.NASWA | naswa.com



SHOP. DINE. EXPLORE.



Lakes Region's Premier Shopping Destination

Unique Marketplace Shops  
5 Distinctive Restaurants • 4 Inns  
Boardwalk, Park & Sculpture Walk  
Friday Night Music - July & August

millfalls.com/Marketplace • Routes 3 & 25 Meredith, NH



Proud to partner with Winnepesaukee Playhouse to provide another season of spectacular performances.

Named Best-In-State Banks for NH by Forbes Magazine 2022



**FSB**  
Franklin Savings Bank  
FSBNH.BANK



#HappyUp at The Studio!

Experience the Lakes Region's most joyful and eclectic shopping experience for yourself!



598 Main Street, Laconia, NH  
603-524-8008 • thestudionh.com



the  
**WINNIPESAUKEE**  
playhouse

FOLLOW US ON



Construction Management  
Construction Services



"Progress on Purpose"  
Since 1969

51 Church Street, Laconia, NH  
www.bpsnh.com 603-524-3411

*LaValley*  
**BUILDING SUPPLY**

www.lavalleys.com

603-524-1692

32 Gilford East Drive, Gilford NH

Hours of Operation:

Monday - Friday: 7am-5pm

Saturday: 8am-3pm

Sunday: Closed



There are many things that make Loving different. It's not just about selling & servicing high quality vehicles. We believe life is about doing the things you love with the people you care about.

- Family-Owned & Operated Since 1996
- 6th Largest Women-Run Business in NH\*
- Top 10 Nationwide for Best Customer Service Reputation\*\*
- A Mission of Giving Back to The Community

\*Business NH Magazine (October 2022 Issue). \*\*Reputation (Automotive Industry Reputation Report 2022).



**LOVERING**  
VOLVO CARS MERCEDES

We are proud to be the largest luxury brand north of Concord for both Sales and Service.

lovingmerced.com | (603) 279-8000  
201 Daniel Webster Highway  
Merridub, NH 03253

MISIASZEK  
TURPIN



ARCHITECTS

Celebrating two decades of client-dedicated design  
residential | non-residential | historic preservation



# Melcher & Prescott INSURANCE

KNOWLEDGE. TRUST. CONFIDENCE.



Since 1862 Melcher & Prescott Insurance has been a proud sponsor of the arts and culture in our community.

Our local professional staff are here to assist you with all your insurance needs including homeowners, automobile, watercraft, business and employee benefits.

*We work closely with our clients to secure the proper coverage at the best price!*

[www.melcher-prescott.com](http://www.melcher-prescott.com) | [insure@melcher-prescott.com](mailto:insure@melcher-prescott.com) | 603-524-4535



**Best Insurance Company**



**This is what retirement looks like.**

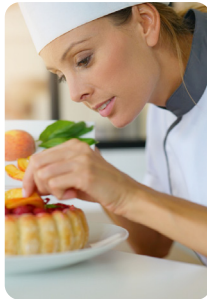



An active community of friends is waiting for you at Taylor.

Taylor Community is located in the beautiful Lakes Region of New Hampshire with campus locations in both Laconia and Wolfeboro. Finding a home at Taylor means more than access to a stunning new cottage or apartment - it means receiving the keys to present and future peace of mind.

Whether you prefer an active lifestyle filled with fitness classes and an extensive lineup of social and recreational opportunities, or would rather enjoy a fine-dining experience with friends after a day spent by the lake...

Taylor is the place for you!



 (603) 366-1400 / [taylorcommunity.org](http://taylorcommunity.org)  
A not-for-profit since 1907

**Discover Taylor Community**  
[taylorcommunity.org](http://taylorcommunity.org)

**Laconia**  
435 Union Avenue  
Laconia, NH 03246

**Wolfeboro**  
83 Rolling Wood Drive  
Wolfeboro, NH 03894

Mello  
Moose  
**COFFEE HOUSE**

136 Daniel Webster Hwy, Meredith  
(603) 677-7037

Great coffee, breakfast sandwiches, and  
fresh baked goods to start your day!

**TWIN BARN**  
BREWING CO

194 Daniel Webster Hwy  
Meredith



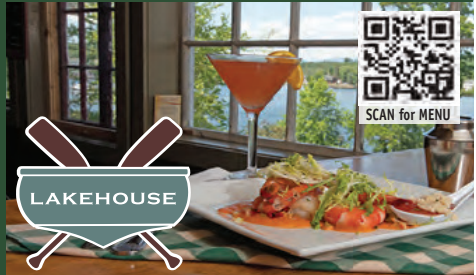
**Bring Ticket Stub To  
Twin Barns for 50%  
off apps**

*The Common Man Family – Setting the Stage for Uncommon Dining*



SCAN for MENU

**LAGO**



SCAN for MENU

**LAKEHOUSE**

Bay Point at Mill Falls • (603) 279-2253

theCMAN.com

Church Landing at Mill Falls • (603) 279-5221



SCAN for MENU

**CAMP**



SCAN for MENU

**TOWN DOCKS**

Chase House at Mill Falls • (603) 279-3003

OPEN MAY - SEPTEMBER! • (603) 279-3445

**GERMAN  
MOTORSPORTS**

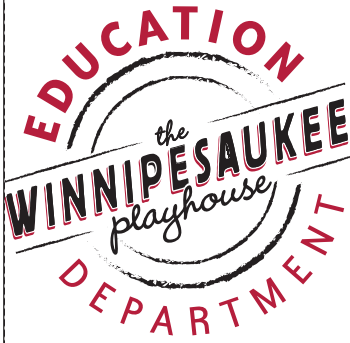
**PORSCHE - ROVER - AUDI - VOLKSWAGEN - BMW - MERCEDES - MINI**

Authorized BOSCH Service Center



**(603) 524-5016** Castrol

[www.germanmotorsportsusa.com](http://www.germanmotorsportsusa.com)



The Winnepesaukee Playhouse Education Department promotes the developmentally appropriate acquisition of theatrical skills, fosters a life-long appreciation of the technique, history, and literature of theatre and its ancillary fields of study, and—above all—seeks to inspire its students to use theatre as a tool to develop empathy, with which they may explore and come to better understand the world.



### **Educational Programming at the Winnepesaukee Playhouse includes:**

- Four fully realized productions annually for students ages 8-18
- Summer camps for students ages 5-12
- Focused summer training for students ages 13-18
- Classes and workshops for participants of all ages
- Post-performance talkbacks
- The Symposium Series
- Backstage tours
- Informative articles in playbills
- Teacher training
- College internships
- Theatre and arts education advocacy



*For more information...*

[winnepesaukeeplayhouse.org/education](http://winnepesaukeeplayhouse.org/education)  
[education@winniplayhouse.org](mailto:education@winniplayhouse.org)

The Winnepesaukee Playhouse Presents  
the Playhouse Education Department in

**Mr. Burns, a post-electric play**

By Anne Washburn

Score by Michael Friedman

Lyrics by Anne Washburn

*Mr. Burns, a post-electric play* is presented by arrangement with  
Concord Theatricals on behalf of Samuel French, Inc.  
[www.concordtheatricals.com](http://www.concordtheatricals.com)

Playwrights Horizons, Inc. produced the New York City premiere of the play  
off-Broadway in 2013.

Originally produced in June, 2012 by Woolly Mammoth Theatre Company,  
Washington, DC, Howard Shalwitz, Artistic Director; Jeffrey Herrmann,  
Managing Director

*Mr. Burns* was Commissioned by The Civilians, New York, NY,  
Steven Cosson, Artistic Director

For the language of the remembering of the Simpsons' episode, Cape Feare, the  
author would like to credit the Civilians actors involved in the initial workshop:  
Quincy Tyler Bernstine, Maria Dizzia, Gibson Frazer, Matt Maher, Jennifer  
Morris, Colleen Werthmann, and Sam Breslin Wright.

The Production Team

Director.....Cory Lawson  
Music Director.....Judy Hayward  
Stage Manager.....Zach Glennon  
Scenic Designer.....Ian Olsen  
Costume Designer.....Sherry Gardner  
Lighting Designer.....Becca Beaulieu  
Sound Designer.....Thom Beaulieu  
Dance Choreographer.....Rebecca Gregoire  
Fight Choreographer.....Kyrie Ellison  
Props Coordinator.....Zach Glennon  
Backstage Crew.....Benjamin Rathjen



# The Cast

Sam, Mr. Burns, First FBI Agent.....Stella Bamford  
Jenny, Scratchy.....Savannah Muzzey  
Colleen, Lisa.....Cloud Walthall  
Quincy, Marge.....Kinley McDonough  
Gibson, Itchy.....Ryker Cott  
Matt, Homer.....Finley Brennan  
Maria, Bart, Second FBI Agent.....Abby Hunt  
Edna.....Anna Cook

This play is set in the very near future.

Then 7 years after that.

Then 75 years after that.

There will be two 10-minute intermissions.

## Note:

This production contains a short strobe-like effect, a water-based, non-allergenic haze effect, and the sounds of gunshots.

Thank you to:

Alicia Beaulieu, Camaro Heaven, Community Players of  
Concord, Dana Gardner, Ruth Glennon,  
Moultonborough Academy



The Winnepesaukee Playhouse Presents  
the Playhouse Education Department in

## **Sideways Stories from Wayside School**

Adapted by John Olive

Based on the novels by Louis Sachar

Performed by Special Arrangement with  
Susan Schulman Literary Agency  
454 West 44th St. New York, N.Y. 10036

### The Production Team

Director.....Patte Sarausky  
Stage Manager.....Judi Rogato  
Scenic Designer.....Ian Olsen  
Costume Designer.....Sherry Gardner  
Lighting Designer.....Becca Beaulieu  
Sound Designer.....Thom Beaulieu  
Props Coordinator.....Zach Glennon

### The Cast

Mrs.Gorf/Mr. Gorf/Miss Valoosh.....Madeline Duncan  
Myron.....Jypsy River  
Dameon.....Madi Jordan  
BeBe.....Ellie Feola  
Leslie.....Gabrielle Youssef  
Rondi.....Hazel Walsh  
Louis/Mr. Pickle.....Wyatt Woodsom  
Voice of Mrs. Kidswater/Miss Zarves.....Evelyn Walsh  
Mrs. Jewls.....Genevieve Youssef  
Sammy/Leslie's Pigtails/Voice of Miss Mush.....Finleigh Thompson

The play takes place in the thirtieth floor classroom of  
Wayside School.

There will be one 15-minute intermission.

Note:

This production contains a short strobe-like effect.

Thank you to:

CVS Gilford, Moultonborough Academy, Jim Rogato



The poster features a central illustration of a boy in a blue jacket and backpack walking on a path that winds through a large, stylized clock face. The clock is surrounded by various historical and cultural landmarks, including a castle, a globe, and a clock tower. The background is a warm, golden-yellow color.

**EDUCATION**  
**the WINNIPESAUKEE**  
**playhouse**  
**DEPARTMENT**  
**SUMMER PROGRAM**

THE WINNIPESAUKEE PLAYHOUSE EDUCATION DEPARTMENT  
**THEATRE CAMP**  
FOR AGES 5-14

Summer 2024 is...  
**A Trip Through Time**  
Join us for an unforgettable summer!

Embark on an extraordinary adventure through the ages with the Winnepesaukee Playhouse's 2024 Summer Theatre Camp - "Summer 2024: A Trip Through Time"! Get ready for a time-traveling extravaganza where creativity knows no bounds. From the roaring dinosaurs of the Jurassic to the groovy vibes of the 60s, join us for a summer filled with laughter, collaboration, and the magic of staging original stories that celebrate the whimsical and the extraordinary--through time!

 <b>JURASSIC JAUNT</b> (July 1 - 5)	 <b>MEDIEVAL MISHAPS</b> (July 8 - 12)	 <b>RIDICULOUS RENAISSANCE</b> (July 15 - 19)	 <b>SENSATIONAL SWASHBUCKLERS</b> (July 22 - 26)	 <b>60s GROOVY GETAWAY</b> (July 29 - August 2)	 <b>EPIC 80s ESCAPADES</b> (August 5 - 9)
-----------------------------------------------------------------------------------------------------------------------------	---------------------------------------------------------------------------------------------------------------------------------	----------------------------------------------------------------------------------------------------------------------------------------	-------------------------------------------------------------------------------------------------------------------------------------------	------------------------------------------------------------------------------------------------------------------------------------------	------------------------------------------------------------------------------------------------------------------------------------

**REGISTER ONLINE TODAY**

Visit us at [winnepesaukeeplayhouse.org/education](http://winnepesaukeeplayhouse.org/education) or Scan this Code!  
Questions? [education@winniplayhouse.org](mailto:education@winniplayhouse.org) / 603-279-0333



# 2024 Subscriptions & Flex Passes

**ON SALE NOW!**

## 2024 All Access Pass \$325.00

One ticket to each of the 13 productions/events in the 2024 season (including the special events: *On the Exhale* and *ImprovOlympics*). Additional 10% discount on all other tickets purchased for 2024 productions/events.

## 2024 Professional Summer Pass \$210.00

One ticket to each of the five (5) professional productions (*Jersey Boys*, *Witch*, *La Cage aux Folles*, *Richard III*, *In the Heights*). Additional 5% discount on all other tickets purchased for 2024 productions/events.

## 2024 Professional Summer Balcony Pass \$115.00

One ticket to each of the five (5) professional productions (*Jersey Boys*, *Witch*, *La Cage aux Folles*, *Richard III*, *In the Heights*). Seating is limited to the front row of the balcony only. Additional 5% discount on all other tickets purchased for 2024 productions/events.

## 2024 Flex Pass \$220.00

Five tickets to use however you like. Mix and match performances or productions in any combination.

### \*The Fine Print:

Passes (and any associated discounts) are not redeemable for rentals or other events produced by a third party. Seats must be reserved in advance and are subject to availability. There are no additional fees associated with redeeming subscription passes. Any unused portion of subscription passes may not be redeemed for cash or credit to your account.

**Stop by the box office or visit [www.winnepesaukeeplayhouse.org](http://www.winnepesaukeeplayhouse.org)  
to purchase a 2024 subscription**

**THE Winni  
PLAYERS**

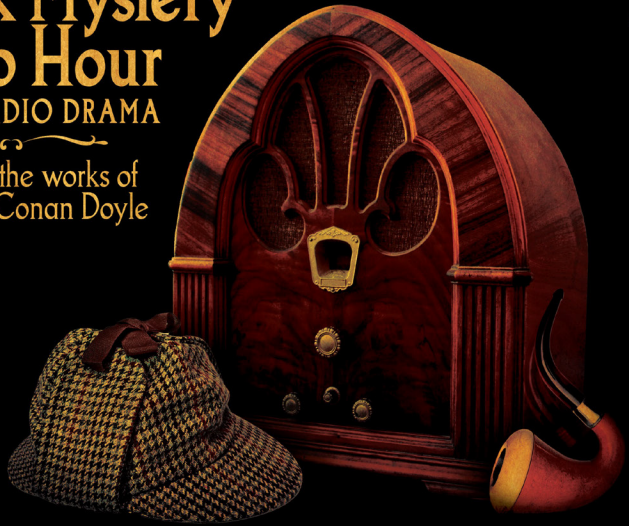
Community Theatre at  
*the*  
**WINNIPESAUKEE**  
*playhouse*

2024 SEASON



**The  
Sherlock Mystery  
Radio Hour**  
A LIVE RADIO DRAMA

Based on the works of  
Sir Arthur Conan Doyle



**FEBRUARY 22-25**

SPONSORS:



**WINNIPESAUKEEPLAYHOUSE.ORG**

**603.279.0333**

**33 Footlight Circle, Meredith NH 03253**

## A Note from the Director

*Mr. Burns, a post-electric play* is a play unlike any other. It is a unique exploration of human resilience, the power of storytelling, and the enduring nature of cultural narratives. The cast and creative team have had quite the journey delving into the imagination and thought-provoking world created by Anne Washburn.

*Mr. Burns* invites us to a post-apocalyptic world where survivors gather around a campfire, recounting episodes of *The Simpsons* to pass the time. This seemingly simple act is the vehicle for deeper exploration. The play challenges us to reflect on the very role of storytelling in our lives and the ways in which cultural touchstones shape our collective identity.

Washburn asks us to consider the transformative power of shared narratives, especially in times of crisis. As we witness the characters attempting to reconstruct an episode of *The Simpsons* from memory, we are confronted with questions about the malleability of truth, the nature of memory, and the subjective interpretation of our cultural heritage. What are the origins of ritual? Religion? What if we were set back to zero today? What would survive? The play's three-act structure, each set in a different period, allows us to explore these questions at length as we watch the evolution of the characters and the cultural references that define them.

I hope you leave the theatre entertained and with a renewed appreciation for the power of storytelling and the enduring spirit of art and human connection. After all, what is more human than sharing stories around a campfire? We hope you enjoy our campfire story today. Thank you for being a part of our post-electric world.

--Cory Lawson

*Mr. Burns, a post-electric play*



# 98.3 Frank <sup>fm</sup>™

**THE SOUNDTRACK OF THE LAKES REGION!**

## Join our team

*Hot Mix & Aggregate Sales  
Asphalt Recycling & Reclamation  
Highway & Site Work Construction*



Find career opportunities at  
[pikeindustries.com/careers](http://pikeindustries.com/careers)



**BRAVO WINNI PLAYHOUSE!**

*Patrick's*  
IRISH ROOTS - AMERICAN SPIRIT

[patrickspub.com](http://patrickspub.com) · 603) 293-0841

18 Weirs Rd Gilford, NH



NEW  
HAMPTON  
SCHOOL

## *Where Aspiring Artists* **TAKE CENTER STAGE**

Whether the arts are a passion or a hobby, there are ample opportunities for professional-level learning at New Hampton School. From the stage to the recording studio, at the ceramics wheel or in the animation lab, our students create in every corner of campus.

[www.newhampton.org](http://www.newhampton.org)



## A Note from the Director

When I was teaching at Belmont Elementary School in the 1980s, I would often see the third and fourth graders walking around carrying *Sideways Stories from Wayside School* books. They seemed very popular, but I was mainly involved with second grade level books. It wasn't until 2024 that I finally got to read a book from the series. Now I know why they were so popular. What kid wouldn't love visiting Wayside School and meeting the colorful characters of the story? We meet Mrs. Gorf who loves changing students into apples. We wonder about a mysterious Miss Zarves who may or may not teach on the 19th floor (Is there even a 19th floor?) Miss Jewls joins in Scene 2 and is the kind teacher every child wants the new teacher to be.

In this production half of the cast members are playing two characters. It has been a fun experience to watch them work on various vocal and physical choices to make each character special and different. I think adults often don't realize how capable the younger actors can be if given the chance to develop their own characters. My role was to make suggestions or pose questions to think about when they showed me their character choices. I believe the 7 to 12 year old youth productions are definitely a training ground for the teen shows the Winnepesaukee Playhouse Education Department produces. We are so fortunate to have such a wonderful program in the Lakes Region.

Sit back, relax, and welcome to the Wayside School. Spoiler alert: if you are scared of rats and are sitting in the front row, you might want to run AND change your seats before the show starts.

-- Patte Sarausky  
*Sideways Stories from Wayside School*



**A FULL SERVICE LAW FIRM**

Estate Planning and Probate  
Business & Non-Profit  
Real Estate  
Employment & Labor  
Municipal

Land Use & Development  
Telecommunications  
Litigation  
Environmental  
Utility

COUNSELING INDIVIDUALS, BUSINESSES,  
ORGANIZATIONS AND MUNICIPALITIES  
THROUGHOUT NEW HAMPSHIRE

DONAHUE, TUCKER & CIANDELLA, PLLC

**PROUDLY SUPPORTING THE ARTS  
FOR OVER 30 YEARS**

OFFICES IN MEREDITH, CONCORD, PORTSMOUTH, & EXETER, NH

**WWW.DTCLAWYERS.COM**

**1-800-566-0506**

# From The Winnepesaukee Playhouse Education Department...

## The Simpsons Fun Facts About the World's Favorite Four-Fingered, Yellow Family:

1. The Simpsons family is made up of five characters: Homer, Marge, Bart, Lisa, and Maggie. Matt Groening created the show and the characters, naming them after members of his own family.
2. *The Simpsons* first aired on December 17, 1989.
3. Bart is one of the most well-known characters in the world, but few people know his full name. Bartholomew Jojo Simpson was more commonly known as Bart, an anagram of the word 'brat'.
4. Danny Elfman composed the famous *Simpsons* theme tune in 1989. It took him just two days to finalize.
5. God is the only character who has five fingers.
6. The most downloaded GPS voice in the world is Homer Simpson's.
7. The Oxford Dictionary decided that the word "d'oh" should be added, and it entered the most popular dictionary in 2001.
8. If you were hoping to buy the rights to *The Simpsons* any time soon, you should think again. Disney/Fox owns the rights for a while yet, and it will be 2082 before they are up for grabs again.
9. On February 9, 1997, *The Simpsons* aired its 167th episode, which made it the longest-running animated series in TV history.
10. *The Simpsons* was named the best series of the entire twenty-first century by Time magazine in 1999.
11. *The Simpsons* has been running for longer than any other scripted prime-time TV series.
12. *The Simpsons* was named the best series of the entire twenty-first century by Time magazine in 1999.

# From The Winnepesaukee Playhouse Education Department...

Hi! My names is Leslie and I am writing this note because I have to. Mrs. Jewls said something about not listening and discipline. BUT this will be fun because I'm supposed to tell you about the coolest school ever. SO just to start....

## WAYSIDE SCHOOL IS THE BEST SCHOOL IN THE WORLD!!

It's such a great school that Mr. Sachar started writing books about us a long, long time ago in 1978. They even made a TV show about us on Nickelodeon, but I wasn't allowed to watch it.

Mrs. Jewls says more than 15 million people read about our school, which is a lot! We tried to count to 15 million, but most of us stopped after 300. Rondi is still going, though, and yesterday was up to 108,004.

Did you know we have our own math book, too? *Sideways Arithmetic from Wayside School*. I'm already good at math, so it didn't help me... but it helped Bebe! She still can't count to 15 million, but she's closer now.

You probably know that Wayside School is built straight up, one classroom on each floor. All the classrooms are great but the 30th floor is the best! We are the highest up so we can have the longest races down to the school yard. (I would have won yesterday, but the cow got in my way passing the 19th floor.)

Oh yeah, the 19th floor is Miss Zarves' floor, and they don't exist. I think of all my favorite things that don't exist (Bigfoot, Loch Ness Monster, Birds) the 19th floor is my favorite!

We do some really fun things here, too! You should try them out at your school or house! We make our own instruments. I made a krulliwat yesterday with floss and a toilet paper roll! Look around your home and make your own instruments using what you can find. Give it a name and start practicing!

We write poems too about our favorite colors. You should try it! (By the way do you know anything that rhymes with periwinkle??)

We also love to dance with Miss Valoosh. Well not dance...Tango! You should Tango, too. It helps if you hold a rose in your mouth...but wash it first!

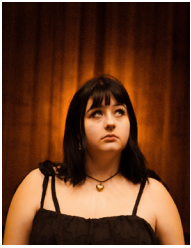
Oh, and since you came to see our play today, you could try writing a play about your friends and your school, too! Then I could come and see you, and you could teach me all about YOUR life.

Ok I have to go. Mrs. Jewls said "places" which means the show is about to start. Thanks for coming!

Leslie



## The Cast - Mr. Burns, a post-electric play



**Stella Bamford** (Sam, Mr. Burns, First FBI Agent) is a senior at Belmont High School and is excited to be in this production of the unique musical, *Mr. Burns*. She has been participating in theater since third grade and has been in many memorable shows. Her favorite roles were Maria in *Twelfth Night*, #46 in *The Wolves*, and Yvette in *Clue*. Some other shows she enjoyed doing were *Aida*, *Grease*, *The Addams Family*, and *Spoon River*. Stella loves dancing, fashion, and food! She's happy to be part of an amazing cast and present a great performance, so please... Enjoy the show!



**Finley Brennan** (Matt, Homer) is an 8th grader who loves theatre and has always wanted to work in film. Favorite roles include Peter Cratchit in *A Christmas Carol* (Jean's Playhouse), Billy Ray in *On Golden Pond* (Jean's Playhouse), Malvolio in *Twelfth Night* (The Winnepesaukee Playhouse), Hamlet in *Sugar-coated Shakespeare* (Theatre Under The Stars), and ensemble in *Carousel* (ETC). Finley is very excited to be returning to the Winnepesaukee Playhouse for *Mr. Burns*.



**Anna Cook** (Edna) Meet Anna Cook! Anna has been a part of over 35 theatre productions in the past, but this is her second with the Winnepesaukee Playhouse and she couldn't be more thrilled. She has 13 years of dance experience and has been participating in local theatre productions since fourth grade. You may have recently seen her playing the role of Hodel in the Playhouse's recent production of *Fiddler On The Roof*. She is excited to bring Edna to life in this production of *Mr. Burns*. She hopes you enjoy the show!



**Ryker Cott** (Gibson, Itchy) decided to do this play because he loves *The Simpsons*. He's very excited to play Gibson.



**Abby Hunt** (Maria, Bart, Second FBI Agent) has been doing theatre at the Winnepesaukee Playhouse since 2012 and is very excited to be a part of this production. On the side, they play acoustic, electric, bass guitar and sing. We thank you all for coming and hope you enjoy our show!

## The Cast - Mr. Burns, a post-electric play



**Kinley McDonough** (Quincy, Marge) is very excited to make her acting debut in *Mr. Burns, a post-electric play*. She is in 8th grade at Wentworth Elementary School, and enjoys acting in her school productions. When she is not in school, Kinley enjoys snowboarding and playing video games with friends. You will find her at the Winnepesaukee Playhouse Theater Camp in the summer. She wants to thank her parents for always driving her to rehearsals.



**Savannah Muzzey** (Jenny, Scratchy) is thrilled to be joining the Winnepesaukee Playhouse for her second production with the Education Department. Though she has been sharing her theatrical passion for 10+ years, she's most recently played Antony in Queen Mab Shakespeare's production of *Antony & Cleopatra* and Scrooge in Newfound Regional High School's production of *A Christmas Carol*. Savannah is so happy to be a part of the challenge and quirkiness of *Mr. Burns, a post-electric play* and is delighted to be surrounded by such a wonderful team once again.



**Cloud Walthall** (Colleen, Lisa) began her love for performing in Kindergarten. Her experiences include *Androcles and the Lion*, Shakespeare's *Midsummer Night's Dream*, *The Emperor's New Clothes*, and *Oliver Twist*. Her work with the Winnepesaukee Playhouse Education Dept. includes *Stuart Little*, *Narnia*, *The Jungle Book*, *The Ash girl*, *Harriet the spy*, *Urinetown*, and *Twelfth Night*. Cloud also helps with set construction and tech crew at her school. When Cloud isn't participating in plays, her interests include volleyball, swimming, reading, writing, Karate, drawing, track, and cooking.

## The Cast - Sideways Stories from Wayside School



**Madeline Duncan** (Mrs. Gorf/Mr. Gorf /Miss Valoosh) is a 6th grader at Sant Bani School who loves to bake, read, and do theatre. She lives in New Hampton with her family, two cats, a dog, and two fish. Madeline has previously performed in *Alexander and the Terrible, Horrible, No Good Very Bad Day*, *James and the Giant Peach*, *Alice in Wonderland*, and *Charlotte's Web*.



**Ellie Feola** (BeBe) is currently a 6th grader at Laconia Middle School. She had her Winnepesaukee Playhouse debut with *Charlotte's Web*. Before that she has been involved with The Streetcar Company and SKYT. Ellie has been in a variety of youth shows; *Elf Jr*, *Alice in Wonderland*, and *Lion King Jr*. Her most recent Streetcar production was in 2023, as Ida, in the production of *Passage into Fear*. Off stage Ellie enjoys drawing and creative crafts.



**Madi Jordan** (Dameon) is 9 years old and in 4th grade. Her hobbies include spending time with her sister, doing gymnastics, art, crafts, and singing and dancing. She got a taste for acting in *Charlotte's Web* last year. This will be her second performance playing the role of Damon, and they both share a dislike of math.



**Jypsy River** (Myron) is learning to ski this winter as well as competing in rock climbing. She is also currently working on playing the Beast in *Beauty and the Beast*. She has two sisters, a twin brother and two amazing dogs. Jypsy loves to draw and read and discuss big books with her extraordinary friends.



**Finleigh Thompson** (Sammy/Leslie's Pigtails/Voice of Miss Mush) is a third grader at New Hampton Community School. She loves art, axolotls, hip hop dancing, jumping on her trampoline, traveling, hanging out with friends and performing on stage. She enjoyed attending the Winnepesaukee Playhouse theatre camp the last two summers. This is her third production.

## The Cast - Sideways Stories from Wayside School



**Evelyn Gail Walsh** (Voice of Mrs. Kidswater/Miss Zarves ) is an 11-year-old 6th grader at Newfound Middle School. She has a cat named Cactus and loves outer space and sloths. She has appeared previously in *The Velveteen Rabbit*, *Charlotte's Web*, and *Alexander and the Terrible Horrible No Good Very Bad Day* with the Winnepesaukee Playhouse Education Department as well as *James and the Giant Peach* at New Hampton School. In her free time, she enjoys playing video games and collecting stuffed animals.



**Hazel Walsh** (Rondi) is a fourth grader at New Hampton Community School. She has been in several shows with the Winnepesaukee Playhouse Education Department, including *The Velveteen Rabbit*, *Charlotte's Web*, *Fiddler on the Roof*, and *Alexander and the Terrible Horrible No Good Very Bad Day*. Last year she also performed in *James and the Giant Peach* at New Hampton School. In her free time, Hazel enjoys watching anime, reading, and seeing friends and family. Hazel loves shopping, doing well in school, and theatre. She is happy to be doing her fifth show here at the Playhouse.



**Wyatt Woodsom** (Louis/Mr. Pickle) is a 5th grader at Belmont Middle School. In his spare time he likes to repair computers and play. This is his first show on a major stage like the Winnepesaukee Playhouse. He hopes to do more in the future since this one is so much fun!



**Gabrielle Youssef** (Leslie) In real life, Gabrielle will find herself an audience to dance, sing, perform magic tricks, and use her humor on, so it's no surprise to anyone that she has found her passion in theatre. Gabrielle is a vivacious 9 year old from Laconia who loves her sister Genevieve, brother Julian, mom, dad and dog Sadie. When she isn't acting, she is usually teaching a rowdy crowd of invisible students in the playroom. She is happy to be back after performing here as Mrs. Zuckerman in *Charlottes Web*, and in Streetcar's *The Jungle Book*.



**Genevieve Youssef** (Mrs. Jewls) is a graceful and compassionate 11 year old from Laconia. She discovered her passion for theater when she took the stage for Powerhouse's *A Christmas Carol* in 2022. Since then, she has starred as Charlotte in the Winnepesaukee Playhouse's *Charlotte's Web*, appeared in the Streetcar Company's *The Jungle Book*, played Amanda Thrupp in Interlakes Summer Theater's *Matilda*, and most recently was Shprintze in the Playhouse's *Fiddler on the Roof*. When she isn't on the stage, she can be found taking a dance or acro class, playing her clarinet, listening to Taylor Swift, or writing a story. She is thrilled to be back on the stage in this production of a fun book come to life!



## The Production Team

**Rebecca Beaulieu** (Lighting Designer) is delighted to be light designing the show that's sideways and the no electricity play. A lighting designer, production manager, and audio engineer, she travels across the country in a variety of roles for many festivals, shows, and events. Becca is happy to land back in her home state of New Hampshire at the Winnepesaukee Playhouse where she was but a wee intern in 2017.

**Kyrie Ellison** (*Mr. Burns* Fight Choreographer) is a performance maker, intimacy/fight choreographer, and theatrical educator based in New Hampshire. Her work utilizes the choreographic, through stage combat and movement, to build femme communal spaces & speculative narratives to confront oppressive forms. She's curious about the stories we tell each other to "just get through it" and how they relate to the fairy tales and tropes made popular by writers. She is passionate about the facilitation of safe spaces for artists, audiences, and creatives to engage with their communities, both locally and globally. Her work has been seen on stage at the Winnepesaukee Playhouse, Bank of New Hampshire Stage (theatreKAPOW), and Sarah Lawrence College. She's ecstatic to be working with Winnepesaukee Playhouse on another performance. Currently, she works as the Assistant Director of Theatre at New Hampton School. Past credits include, but are not limited to *The Thanksgiving Play* (theatreKAPOW), *Sweeney Todd* (Winnepesaukee Playhouse), *Tiny Beautiful Things* (theatreKAPOW), *Ken Ludwig's Lend Me a Tenor* (Winnepesaukee Playhouse), *Mr. Wolf* (theatreKAPOW), *Breadcrumbs* (theatreKAPOW), *Weekend Warrior* (Sarah Lawrence College), *Athena* (Sarah Lawrence College), *Small Mouth Sounds* (Sarah Lawrence College), *Spring Awakening* (Russell Sage College), and *Cabaret* (Russell Sage College). [www.ellisonarts.com](http://www.ellisonarts.com)

**Sherry Gardner** (Costume Designer) began to help out backstage at the Winnepesaukee Playhouse 15 years ago when her children participated in the Education Program. Since then she has made costumes, props, and been the stage manager for numerous shows at the Playhouse, at Powerhouse Theatre Collaborative, and at area high schools. She lives in Gilford with her family.

**Zach Glennon** (*Mr. Burns* Stage Manager/Props Coordinator) is very excited to be making a return to the Winnepesaukee Education Department here at the Playhouse. He is excited to be dusting off his Stage Management skills for *Mr. Burns* and his props skills for *Mr. Burns* and *Sideways Stories from Wayside School*. During his brief hiatus he earned a Masters of Education in Integrated Arts from Plymouth State, while starting his career as a Technology Education Teacher at Moultonborough Academy. He has been working with the Education Department since 2015 and has worked on almost 60 shows between the Education, Community, and Professional branches at the Playhouse since 2014.

**Rebecca Gregoire** (*Mr. Burns* Dance Choreographer) - aka Ms. Becky - has been teaching dance at Edgewater Academy of Dance for 20+ years and is now the new Owner/Director. Her passion for dance shows through performances and awards her choreography has received. Ms. Becky expanded her teaching skills in 2014 by joining the Dance department at Plymouth State University. Ms. Becky also loves teaching at the Winnepesaukee Playhouse. She choreographed the Winnepesaukee Playhouse productions of *Pippi Longstocking*, *Narnia*, and *Alexander and the Terrible Horrible No Good Very Bad Day*. Ms. Becky has been a teacher at the summer camp program for the Winnepesaukee Playhouse for many years and just last year took the roll of the camp administrator. The most fun and exciting experience she had was

## The Production Team

being a back up dancer for Weird Al at The Bank Of New Hampshire Pavilion. Her choreography was also featured in an opening act for Selena Gomez. She recently choreographed a piece that was featured in a Recycled Percussion Show. Ms. Becky's choreography has also been featured at a Monarchs Hockey Game and the Muskrats baseball Game. She has also been a part of the New Hampshire Dance Movement for 6 years. Ms. Becky currently resides in Laconia with her husband, Wayne, of 16 years and her 15 year old child, Peyton. Ms. Becky loves to be involved in the community so she involved herself with the PTO when Peyton began going to Elm Street School and quickly became the coordinator for the PTO. Becky's child moved up to the middle school so Becky moved up as well to be the PTO coordinator for the middle school. Now that Peyton is in the Marching band in High school Becky became the vice president of the Band booster for Laconia High School. Ms. Becky recently became a part of the Lakeport TIF advisory board. This board brings excess revenue back into the community for improvements.

**Judy Hayward** (Music Director) holds a BFA in Piano Performance from LA Tech Univ. and a Master's degree from the Univ. of Oregon in Arts Administration. She has music directed for numerous theaters, both professional and community, from coast to coast. In the Northeast, Judy has music directed for the Winnepesaukee Playhouse, Seacoast Rep, StageCoach Productions, Actorsingers, Stoneham Theater (MA), among others. Judy received the NH Theatre Award for music direction for Winnepesaukee Playhouse's productions of *The Fantasticks!* and *Chicago*. In addition, she was music director for their productions of *Shout!*, *Dani Girl*, *Tell Me On a Sunday*, *Jesus Christ Superstar*, [title of show], *The 25th Annual Putnum County Spelling Bee*, *Joseph...Dreamcoat*, *Godspell*, *Peter and the Starcatcher*, *Cabaret*, *High Society*, *Aida*, *Cárrie*, *Urinetown*, and the holiday *Pantos*.

**Ian Olsen** (Scenic Designer) is so excited for his Winnepesaukee Playhouse debut! Hi Mom! He received his MFA in scenic design from Texas Tech University, undergraduate Hartwick College. Shout out to The National Theater Institute. Recent select credits include: *Simply Simone*, Lincoln Community Playhouse; *The Seagull*, FutureHome Productions; *You're NOT Sick*, Corpus Productions.

**Judi Rogato** (*Sideways Stories* Stage Manager) is pleased to have been part of her first Education Dept production from the beginning to the end. It was a very positive experience working with the youth. She believes there are some very talented cast members as you will see. As usual, Patte is a delight to work with in any capacity. Enjoy the show.

**Patte Sarausky** (*Sideways Stories* Director) is currently a retired teacher. She taught for thirty-seven years in schools throughout the Lakes Region and earned her Master's Degree from Lesley University in Creativity in Curriculum. Patte was the director of the drama program for Belmont Elementary School for 30 years. She has also done choreography for Belmont High School, Streetcar Company, and One Light Theatre. Patte enjoys being the Drama Teacher for Camp 1 at the Playhouse's Summer Theater Camp. She became involved in theatre in sixth grade when she was cast as Gretel in *Hansel and Gretel*. At the Playhouse she has been seen in *Our Town*, *Momologues*, *Father of the Bride*, *To Kill a Mockingbird*, *The Odd Couple (Female Version)*, *Company*, and *Fiddler on the Roof*. Past Playhouse directing credits include *The Jungle Book*, *Harriet the Spy*, and *The Velveteen Rabbit*. Her favorite part of theater is experiencing the process of a show's progress from auditions to the final product and seeing the cast come together to support each other.

## Permanent Staff

**Thom Beaulieu** (Managing Director/Sound Designer) is pleased to be a part of the staff at the Playhouse. An award-winning lighting and sound designer, Thom holds a BFA in Drama from Carnegie Mellon University's School of Drama, as well as an MS in Physics from Georgia State University. He enjoys golf, boating, and poker, and lives in New Hampton with his wife Meredith and daughter Molly.

**Amanda Dickinson** (Production Manager) holds a Bachelor of Science in Speech and Hearing from Elmira College and a Master of Science in Speech-Language Pathology from The MGH Institute of Health Professions, and has been a practicing medical Speech-Language Pathologist for 18 years. She first came to the Playhouse in 2017 as a community theatre actor, and has gone on to work in technical theatre across all three divisions of the organization. Amanda joined the permanent Playhouse staff as Production Manager in 2023.

**Donna Findlay** (Bookkeeper) joined the Playhouse in 2015 after retiring from a 21 year career at a public utility in Manchester, NH and spending 5 years as a para-educator in the Inter-Lakes School District here in Meredith. She gives unending love and gratitude to Jim, Cortland, John, and grandson Jimmy.

**Matthew Hutchens** (Technical Director) started at the Winnepesaukee Playhouse originally as a carpenter for 2021 season. He has stuck with us since then as the assistant technical director for 2022 and became the technical director in 2023. Matthew's goals as the technical director are to teach others while also creating beautiful sets for the stage.

**YOUR AD HERE!**

**Would you like to be a sponsor or program advertiser for our 2024 season? Contact [info@winniplayhouse.org](mailto:info@winniplayhouse.org) for more information!**

## Permanent Staff

**Cory Lawson** (*Mr. Burns Director*/Director of Education and Community Engagement) is a professional actor, director, and theatre educator. He is currently working on his dissertation for his Ph.D. in Interdisciplinary Fine Arts at Texas Tech University, where his research is in theatre festivals and devised works. He has devised and performed in several shows with the Dutch theatre company Orkater, both in Amsterdam and New York City. Cory has also created work with The Living Theatre and helped to found Ready Set Go Theatre, which created the world's first Shakespeare Webisodes. In 2021, he was named National Artist of the Year at the St Louis Fringe. As an actor and director, Cory's work has been seen professionally in New York, in regional theatres across the country, and on-screen in various television episodes and commercials. Cory holds his MFA in acting from The New School for Drama and a BA in Theatre: Performance and Dramaturgy from Roanoke College. He has served as the Associate Director of Education and Outreach at the Alabama Shakespeare Festival, the Artistic Director of The Burktech Players (a neurodiverse theatre company in Lubbock, Texas), and the Director of The Wallace Weekend Players in Levelland, Texas. Most recently, Cory co-founded and served as the Artistic Director of The Outside In Festival, a new nonprofit Theatre Festival showcasing devised works through the fostering and presentation of both national and international artists.

**Timothy L'Ecuyer** [he/him/his] (Artistic Director) is a theatre director and teaching artist with an interest in work that sits at the intersection of things: the collision of the classical and the contemporary, the mundane and the eternal, the academic and the immediate. He has been the Artistic Director of the Winnepesaukee Playhouse since 2023 and previously served as Director of Education since 2014. His directing credits at the Playhouse include *The 39 Steps*, *Red*, *Grace and Glorie*, *A Midsummer Night's Dream*, *The Rocky Horror Show*, *Mary's Wedding*, *California Suite*, *The Complete Works of William Shakespeare (abridged) [revised]*, *Shout! The Mod Musical*, *Sweeney Todd*, and fourteen productions with the Education Department. Mr. L'Ecuyer has BAs in theatre and English from Keene State College as well as an MA and MFA in theatre education and applied theatre from Emerson College. He is a former president of the New Hampshire Educational Theatre Guild, an Equity stage manager, and a Teaching Lecturer in the Music, Theatre and Dance Department at Plymouth State University, where he teaches arts management, acting, and dramatic literature. Directing at PSU: *Our Town*, *An Enemy of the People*, *The Curious Incident of the Dog in the Night-Time*, and *Urinetown*. He has worked with many New Hampshire and Boston area theatres including American Stage Festival, Barnstormers, theatre KAPOW, Peacock Players, StageCoach Productions, Greater Boston Stage Company, the Nora Theatre Company, and Underground Railway Theater. [timothylecuyer.com](http://timothylecuyer.com)

**Lesley Pankhurst** (Patron and Company Services Director) is one of the founders of the Winnepesaukee Playhouse. Lesley is a graduate of Wellesley College with an MA in Arts Administration and Cultural Policy from Goldsmiths College, University of London. In addition to serving as the Marketing Director of the Playhouse for its first 13 years, she has also designed costumes for many of its productions and has twice been the recipient of the NH Theatre Award for Best Professional Costume Design for *Two Rooms* (2007) and *The Glass Menagerie* (2008). She is the proud mom to her daughter, Sophie, cat Sasha, and wife to the proudly retired Neil.



# Thanks

*Thank you for recognizing that art matters.  
It takes everyone working together to continue to create great theatre.*

## Directors' Circle

---

### **\$25,000+**

Anonymous  
Anonymous  
Anonymous  
Paul and Sharon Steinwachs

### **\$10,000+**

The Baker Family  
Beth and Rich Compson  
NH Charitable Foundation

### **\$5,000+**

Richard and Carol Gerken  
Laura and Gary Stephan

### **\$2,500+**

Gloria and Irving Fox  
Ellie Gordon  
John & Muff Walker

### **\$1,000+**

Anonymous  
Ray and Karen Abramson  
Marc and Carol Bard  
Cyrus Bowditch  
Mike and Lisa Brien  
Jim and Leslie Chapman  
Judy Cookman  
Ray Craigie and Pam Smarling  
James and Bonnie Doherty  
The Findlay Family  
Chuck and Diane Fray  
Liz and Bob Gabel  
Julie Hirshan Hart and Jeremy Hart  
James Whittredge Hill  
Jennifer and Randy Hobbs  
Paul and Beverly Jaques  
Jason and Izzy McKinney  
Susan and Douglas McLane  
Sharon and Tom Messmore  
Debra Nash  
Kate O'Brien  
Neil and Lesley Pankhurst  
Barbara Pitsch  
John and Cleo Robbins  
Jason and Deanne Sargent  
Carolyn S Scattergood  
Ambassador Paul Speltz and  
Renee Speltz  
Anita E. Springer  
Graham and Julia Thomson  
Barbara Zeckhausen

# *to YOU!*

## *Actors' Circle*

---

### **\$500+**

Anonymous  
Michael Ames/Half Moon Enterprises, Inc  
Bank of New Hampshire  
The Denny Knight Family Fund of the Princeton Area Community Foundation  
Kelly Dunn  
Laura & Rodney Felgate & Gail Barrett  
John and Carol Ford  
Don and Lou Ann Harris  
Susanna High  
David and Patricia Immen  
Elizabeth Immen  
John and Janice Lynch  
Joan and David Martin  
Louise and Sandy McGinnes  
Mark and Susan Primeau  
Robert and Margie Sallies  
Patricia P Schlesinger  
Gil Schohan  
Judy and Steve Siegel  
John Stenbit  
Bruce and Betsy Thomas  
Deborah & Paul Walker  
Wayfarers Investment Club  
Barbara and Gordon Webb  
Pamela Winkler  
Mr. & Mrs. Brian Winslow  
John and Karen Yeigh

### **\$250+**

Anonymous  
Anonymous  
Janet Baurle  
Tony and Terri Bouchard  
John Browne  
Sarah Bunkley and Richard Smith  
James Burke  
Bob & Elaine Carangelo  
Ken Chapman and

Carol Lowden  
Abraham and Lynn T. Dadian  
Annie Donahue  
Carol and Robert Doretti  
Graham Edmondson  
David and Claudia Ferber  
Kendra and Paul Ferreira  
Carolyn & Ken Filpula  
Debbie Frawley Drake  
Lisa Furlong  
Jamie Gegerson  
Robert and Eileen Gosselin  
Katie Guilmett  
Joseph Kelaghan  
Kelly Kinhan  
Katherine Kinnicutt  
Family Foundation  
Constance Kuekan  
Charlotte Lee and Ron Turbayne  
Brad and Lynn Leighton  
Deborah Leonard Kosits  
Lisa Lovett  
William and Stefanie Marsh  
Alan and Carol Metevia  
Jeff and Bobby Morgenstern  
In Memory of Jason and Harriett Morse  
Kaitlin O'Neil  
Diane and Tom Orlovski  
Charlotte Otto  
Rosemary Pizzuti  
Gail Putnam  
Kristin Snow  
Edward Sonn and Sharon Forde  
David Stamps and Judith Buswell  
The Truesdale Family  
Mark and Kathleen Whitehead  
Christian and Debra Zimmermann

### **\$100+**

Anonymous

Anonymous  
Anonymous  
Anonymous  
Miriam Adams  
Dalia Aleman  
Amazon Smile Foundation  
Christine and Carlos Anderson  
Cecile Andrews  
Delaney Andrews  
Rick and Rae Andrews  
William Bald  
Gail Barrett  
Chuck and Sue Bates  
George Berman  
Craig Betchart  
Frank & Nancy Betchart  
Peter Bixby  
Allison Borowy  
Steve and Judy Brown  
John Browne  
Jay Buckley  
Patrick J. Buckley  
Michelle Carrier-Trial and Rene Trial  
Alison and Christopher Casco  
Drs Paula and Ray Chambers  
Mark Chiffer  
Stephanie Collins  
Matthew Croak  
Alexa Dembiec  
Robert and Patricia DeNoble  
Diane G. Dion  
Martha Dolben  
James Downey  
Denise Doyle  
Dr Noe  
Kim Duncan  
Mark G. Edelstein  
The Elliotts  
Ms. Cornelia Eschborn  
Georgene Fabian  
Andrew Fleischmann  
Georgie Flowers

# *Actors' Circle (continued)*

Michael and Ellen Giguere	Patte and Steve Sarausky	Rebecca Fahey
Lynn Goddard	Robert Sawyer	Daniel and Gail Flannery
Lois Grant	Dennis and	Alexis Furlong
Jean Halfmann	Kerry Schneider	Wayne and Shirley Gould
J William Harris	Melissa Shakun	Megan Greenstein
Deb Hastings and	Jack and Doreen Sheppard	Rebecca Gregoire
Fred Wernig	Chris Slater	Dean Gulezian
Steve Jenkins	Thomas Staley	Kevin Hall
Gary D Jesseman	Mr. and Mrs. Fred Strader	Nancy Henn
Mark Johnson and	Monica and Paul Sullivan	Andrea Houghton
Donna Tasso-Johnson	Pam and Larry Tarica	Janet Keefe
Christine and Paul Jolie	Margaret Turner	Christopher Kiley
Susan Karsten	Joyce Tyler	Carolyn Kobsa
Pat Kelly	William Vanca	Eliza J Leadbeater
Ira and Lynn Keltz	Deborah Vargo	Jonathan and Glenna Lee
Martin and	James Wavle	Nancy and Newbold LeRoy
Brenda Killourie	Lindsay Weiner	In Memory of
Bernice and Bernie Kramer		John Morgenstern, from
Nancy Kubecka	<b>\$50+</b>	Rob Lubin and Kent Brown
Maureen Kuharic	Anonymous	Charlene Malek
Peter and Linda L'Ecuyer	Donna Acox	Alexandra Manoloff
Marc and Carroll Levey	Marcy Alkalay	Jessie Marden
Peter and Maryann Magoun	Kay Anderson	T. J. McCabe, Jr
Dr. Warren &	Sol and Catherine Asmar	Joel Mercier
Annette Mason	William Batchelder	Sheila Michalke
William McArthur	Richard and	Monica Michalsky
Robert and Donna McCoy	Rosalie Beaulieu	& Tom Stankosky
Mary and James Michener	Andy Bedford	Gerard and Joanne Morin
Greg & Regis Miller	Benevity Community	Linda Morse
In Memory of	Impact Fund	Savannah Muzzey
John Morgenstern	Barbara and	New Hampshire Center
Melissa Gabel Morse	Charles Birdsey	for Nonprofits
Paul Mroczka	Irene and John Bonner	Jeffery & Jayne Peck
Sean and Helen Murphy	Matt, Carey,	Scott Piddington
Debra and Timothy Naro	and Emma Cahoon	Andrew Pinard
Margaret and Stephen Ober	Suzanne Caroselli	Glen Potter
Deborah Osborne	The Cottages of Wolfeboro	Alan Provance
A Parnes	Jo Ann Clark	Charlene Puzzo
Daniel Patterson	Judith Clayman	Lynne Rainen
Rosemary and Clive Perry	Cynthia and Harvey Creem	Marta Rainer
Clayton Phillips	Emily Dahl	Tracy and Mark Renaud
John and Dorothy Piquado	Cara David	Rebecca Rigden
Walter and	Hannah Davidson	Sebastian Ryder
Christine Powers	David and Sylvia Detscher	Elizabeth Sallies
The Pundits of Yale	Thomas Dixon	Robert Sears
Mike and Sarah	and Annmarie Karayianes	Sally Sibulkin
Catherine Richardson	Melissa and Doane	Cheryl Stocks
Sharon Richardson	Dorchester	Sara Tirrell
The Rickenbachs	Robin Dorff	Rafael Vazquez
Mary and Dave Rogers	Drapcho Family	Randy and Terrie Verzillo
Joe Sampson	Linda Enderwick	Lu Ann Walsh
Carole Sands	Miriam Erick	Richard Williams

### *All Other Gifts*

Anonymous  
Anonymous  
Tracy Aber  
Elizabeth Ahl  
Sharon Aronovitch  
Eileen Bates-Bordies  
Karen and Paul Bemis  
Joan Besing  
Bert Bosse  
Roberta Brayer  
Karen Brickman  
Russell Brummer  
Elizabeth Bulasko  
Kevin and Mary  
Ellen Canty  
Janice Cardarelli  
Melody Carter  
Alyse Castonguay  
Bill Charles  
Vickie Chase  
Tyler Christie  
Paul Ciborowski  
Patti Cohen Hecht  
Bob and Lynn Crosby  
Timothy Cullen  
Michael Daebler  
Alexander Davis  
Beth Day  
Judith Dean  
Susan Denoncourt  
A. Robert Dionne  
Maryann Dodge  
Sarah Duffley  
Richard Duke  
Clark Dumont  
Kerri Dutile  
Jean Etter  
Melanie Flanagan

Mark and Linnea Fraser  
Darlene Fritz  
Christina Fuller  
Frank Garcia  
Virginia Gassman  
Amy Grimm  
Jennifer A Grunbeck  
Nancy Hall  
Madeline Hanafin  
Hannaford Community  
Bag Program  
Jennifer Hanson  
Janis Hardiman  
Ann Hebert  
Andrew Hendrick  
Susan Henkel  
Hazel Heywood  
Alison Hildebrand  
Joia Hughes  
Amanda Jennison-Sousa  
JM  
Karen Kharitonov  
Valerie and Karl Kimball  
Kathryn Kittredge  
Pamela Klingler  
Kathy Lacey  
Charles Lambert  
John & Nancy Law  
Cory Lawson  
Lynn Lawson  
Nathalie Leclair  
Michelle Levinson  
Denise Livingstone  
Thad Long  
Cassandra Lovering  
Heidi Luscher  
Mark Macdonald  
Debra Macone  
Cassandra Mason

Jennifer Mastergeorge  
Marcia McCaffrey  
Deirdre A Meehan  
Donald R Meeken  
Daniel Moody  
Paul Nelson  
Junette Pearson  
Penny and Paul  
Normand Pinette  
Catherine M Pitari  
Karen Plummer  
Michael Portrie  
Veronica Rosa  
Janine M. Schifino  
Linda Schocken  
Jennifer Simon  
Angela Smith  
Lori Smock-Joyal  
Dana and Andy Snyder  
Susan Swain  
Jennifer Szendre  
Allison Szklarz  
Evelyn Tate  
Judy Taylor  
Bruce and Pam Thayer  
Marie Valliere  
Valerie Verge  
Patricia Weston  
Kim Whitney  
Amanda Whitworth  
Shelley Wieler  
Lowell Williams  
Patricia Williams  
Alyssa Yolda  
Lorna Zammett

*Donation list dated  
2/3/23 - 2/2/24*

## *Morgenstern Sustainers*

Anonymous	Katie Guilmett	Joe Sampson
Anonymous	Julie Hirshan Hart and Jeremy Hart	Jason and Deanne Sargent
John and Linda Browne	Jennifer and Randy Hobbs	Mary and Dave Rogers
J.W. Hill, Consultant	Ira and Lynn Keltz	Graham and Julia Thomson
Sarah Bunkley and Richard Smith	Susan and Douglas McLane	John and Muff Walker
Alison and Christopher Casco	Kaitlin O'Neil	Brian Winslow

These are people who participate in the continued success of the Playhouse through their recurring gifts, and we are so grateful for the ongoing support.



# *We appreciate your support!*

**Did you know that in typical years ticket sales only account for about 50% of what it takes to run the Winnepesaukee Playhouse?**

Sadly, these have not been typical years recently. But patrons just like you have been so supportive and generous. No gift to the Playhouse is too small, and every donation helps us keep artists employed and audiences entertained throughout the year. If you would like to become a donor, or make an additional donation, your tax-deductible gift will be instrumental in helping to ensure the Playhouse can continue to provide the level of programming you have come to expect.

You can make a donation today by visiting the box office, calling us at (603) 279-0333, or visiting our website: [www.winnepesaukeeplayhouse.org](http://www.winnepesaukeeplayhouse.org)

**Is it time to take your involvement to the next level?**

- You could make a one-time gift of \$100
- Join the Morgenstern Sustainers with a monthly gift of \$10
- Join our Directors' Circle at \$1,000 a year (\$85/month)

You can be the one to inspire, engage, and entertain the community by making a tax-deductible gift. You can mail us a check, use your credit card online or over the phone, or stop by the box office today.

**There are even more creative ways to support the Winnepesaukee Playhouse!**

Have you ever considered including the Winnepesaukee Playhouse in your will? A gift through your will or estate plan enables you to support our mission and make a difference in the future of the Winnepesaukee Playhouse. Did you know you can use your IRA required minimum distribution to make a tax-free donation to a non-profit like the Winnepesaukee Playhouse?

Questions? Speak with your financial advisor, or contact Thom Beaulieu at 603-279-0333 or [thom@winnepesaukeeplayhouse.org](mailto:thom@winnepesaukeeplayhouse.org).

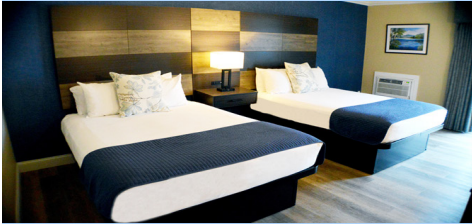


**THE MARGATE**  
ON • WINNIPESAUKEE



LOCATED ON 400 FEET OF PRIVATE SANDY BEACH ON THE SHORES OF LAKE WINNIPESAUKEE

- ⊙ LAKE VIEW & BEACH FRONT ROOMS AVAILABLE
- ⊙ INDOOR & OUTDOOR POOLS
- ⊙ WHIRLPOOL, SAUNA, FITNESS CENTER
- ⊙ BEAUTY SALON & SPA
- ⊙ WEDDING, GROUP EVENT, AND CONFERENCE FACILITIES
- ⊙ FREE WIRELESS INTERNET
- ⊙ ARCADE GAME ROOM
- ⊙ PRIVATE BEACH BAR & 400' SANDY BEACH
- ⊙ MULTI-NIGHT DISCOUNTS AVAILABLE!
- ⊙ ... AND MUCH MORE!



76 LAKE ST, LACONIA, NH ♦ 1-800-MARGATE  
WWW.THEMARGATE.COM

**THE FITNESS**  
*Edge*

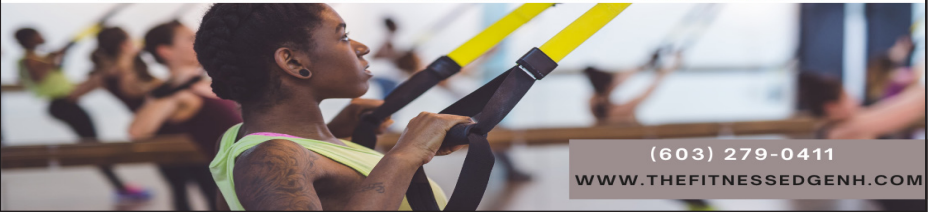
BOOT CAMP PLUS | INDOOR CYCLING | TOTAL BODY TONE  
BARRE | POSTURE | YOGA | ZUMBA | TRX AND MORE!

WE OFFER  
LIVE & ZOOM  
CLASSES

169 DANIEL WEBSTER HIGHWAY  
MERIDITH NH

78 WHITTIER HIGHWAY  
MOULTONBOROUGH NH

OFFERING NH LAKES REGION 2 CONVENIENT HEALTH CLUB LOCATIONS!



(603) 279-0411  
WWW.THEFITNESSEEDGENH.COM

*Birch Hill*  
BOOKKEEPING & CONSULTING



James W. Hill  
Owner

Mailing Address:  
Post Office Box 101  
Moultonborough, NH 03254-0101  
Cell: 603-476-2521  
Fax: 1-877-495-6388

*Have Laptop. Will Travel...*

email: jim@birchhill.net

Visit us online at [www.birchhill.net](http://www.birchhill.net)



# JOE WALKER Marketing Services

"Vision without action is a daydream.  
Action without vision is a nightmare."

-Japanese Proverb

*Does your business have vision?*

- Strategic business plan development
- Promotional / advertising plans
- Marketing plans
- Non-profit fundraising plans
- Presentations / guest speaking

JoeWalkerMarketing.com  
info@joewalkermarketing.com  
603-731-0693

**Franchisee**  
Call 603-369-4376  
to advertise.



Specializing in  
social media marketing  
to help small businesses  
grow their online presence



KLWConsulting@outlook.com  
klwconsulting.net

## CHRISTOPHER P. WILLIAMS ARCHITECTS, PLLC

PO Box 703 • Meredith, NH 03253 • 603-279-6513  
www.cpwarchitects.com



Our award winning firm has provided innovative and environmentally sensitive design solutions since 1984. We specialize in sustainable building practices and offer expertise in incorporating green systems into client projects to enhance and protect the ecosystem, and conserve natural resources. We strive to design buildings that fit into their cultural context and environment.



# MIRACLE FARMS

LANDSCAPE CONTRACTORS



Moultonborough, New Hampshire (888)288-8252

*Extraordinary landscapes begin here!*

Landscaping

Maintenance

Hardscapes

Mulch/Loam/Compost

Firewood Dry/Green

603-253-9292

[www.miraclefarmslandscaping.com](http://www.miraclefarmslandscaping.com)



The Winnepesaukee Playhouse is grateful to the following foundations for their support.



STEINWACHS FAMILY  
FOUNDATION



New Hampshire  
State Council on the Arts



NEW HAMPSHIRE  
CHARITABLE FOUNDATION

The Winnepesaukee Playhouse is supported in part by a grant from the New Hampshire State Council on the Arts & the National Endowment for the Arts.



Supporting the Arts  
**LAURA & GARY STEPHAN**  
*In loving memory*  
 Dorothy Marie Schrader  
 Gerald Lewis Schrader



**The Laconia Daily Sun**

Online at [laconiadailysun.com](http://laconiadailysun.com)

Daily Newsletters • Home Delivery (603)737-2020



1-800-CAMARO-1  
 (603) 286-8087

New & Used Parts  
 Cars, Trucks, SUVs  
 Foreign Domestic Hybrid

Used Cars Bought and Sold  
 We Will Pick Your Unwanted  
 Vehicle Up!

Chuck Drew - Owner

112 Clark Rd, Tilton, NH 03276 [www.camaroheaven.com](http://www.camaroheaven.com)

**The community we service  
 is the community we support.**

We thank our local communities for trusting us to be there when they need us, and are proud to do our part in supporting them.



Reliable Deliveries | Responsive Service

[www.deadriverr.com](http://www.deadriverr.com)



**Winnepesaukee Playhouse  
Merchandise  
For Sale in our Lobby!**



**invisalign®  
TouchUp!**

Are your teeth out of alignment  
and need a Touch-Up?  
Need a new set of Retainers?

**Give Dr. Kennell  
a Call Today!**



Dr. Alan F. Kennell



KennellOrtho.com | 524-7404 Laconia | 536-7404 Plymouth | 444-7403 Littleton

Before the Play  
enjoy dinner at



253-4762      524-9373  
Center Harbor      Lakeport  
www.magicfoodsrestaurantgroup.com

**Prescott Farm**  
Environmental Education Center



After the play—  
we'll help you find ways to play  
outside!



928 White Oaks Road, Laconia  
603.366.5695      prescottfarm.org

# Our Real Estate Goals are simple....

***They're Yours!***



**Scott Knowles**

603.455.7751

scottknowles@metrocast.net

**Chris Adams**

603.393.7993

adamschris195@gmail.com

**Chris Kelly**

603.677.2182

chriskelly@baysidenh.net



**We have everything you need in real estate**

208 Daniel Webster Highway, Meredith, NH 03253

(603) 279-0079

604 Main Street, Laconia, NH 03246

(603) 527-8200

[www.baysideplatinumgroup.com](http://www.baysideplatinumgroup.com)



*Very Music Very Italian & Very Good!*



Celebrating  
35 Years!

# Giuseppe's

## Pizzeria & Ristorante

*Live  
Music*

**This unique and popular restaurant is  
one of the Lakes Region's most loved since 1989!**

Serving Award-Winning Gourmet Pizza, Pasta, Seafood,  
Steak, Chicken, Veal, Vegetarian, Vegan, Gluten-Free,  
Soup, Salads, Desserts, Cappuccino,  
Beer, and a fabulous selection of Wine and Spirits!

**Lunch and Dinner Daily**

***Reservations are highly recommended and greatly appreciated!***

Located on the corner of Routes 3 & 25  
Mill Falls Marketplace, Meredith, NH

**Call (603) 279-3313  
For Reservations & Take Out  
Visit [giuseppesnh.com](http://giuseppesnh.com)**



# LAKES REGION COMPUTER



**Over 27 Years In  
Business!**

**Your One Stop Shop for  
all things Tech**

## **IT Business**

### **Services:**

Computer Systems and Network

Installations

System Monitoring and  
Management

Backup and Disaster Recovery

Security and Compliance

Cloud Solutions

IT Inventory and Planning

On-site and remote Support

Wireless Network Planning and

Installations

Security Cameras

Nextiva Business Phone Systems

## **Visit Our Retail Store!**

Verizon Authorized Retailer

Apple Authorized Service Provider

Apple, PC, and Phone Accessories

iPhone and Computer Repairs



**Scan Me!**



## **WHERE TO FIND US?**

12 Main St Center Harbor, NH 03226

Phone: 603-253-9847

Online: [lakesregioncomputer.com](http://lakesregioncomputer.com)

 @lakesregioncomputer